

Proudly Canadian Since 1973



Atlantic Electronics Limited



Fall 2023/ Winter 2024

www.ael.ca
1-888-235-3628

DID YOU KNOW THAT AEL OFFERS CREDIT?*

That's right! Standard 30+Day interest free.
Then only 2% on remaining balances, O.A.C.

*With approved credit application. Inquire at your local branch.

Building a New Boat?

Get up to 6-Months No Payments, No Interest
O.A.C.

AEL is committed to keeping you on the water



Economical Satellite Tracking and Communications for the
Marine Industry

SASCO VMS Monitoring \$1995 COMPLETE KIT*

DFO Approved now and for
future changes

*install extra

FEATURES

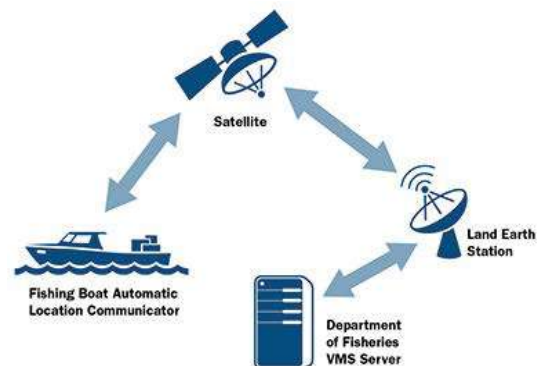
- Approved by DFO for VMS in all Fishing Areas in Canada
- BB3 meets and exceeds current and proposed specifications
- Reliable Sytem
- 24/7 Vessel Tracking
- Made in USA

INCLUDED

- SASCO BB3 VMS
- Iridium
- Iridium Antenna
- GPS Antenna



DON'T GET CAUGHT WITHOUT IT!
Certified DFO



AEL provides full airtime options. Call Lori or Kelly (French) at 1-888-235-3628



HONDEX ELECTRONICS has brought innovations to the world by introducing ultrasonic technologies since the release of the world-first transistor fishfinder in 1956. With originality in mind, HONDEX ELECTRONICS also respects technologies in various fields and participates in many collaborative projects.

HONDEX HDX-121/BB

\$3995/2595

New Era of Commercial Fishing Professional
Plotting Device

Choose an
Integrated Screen
or Black Box

Multiple Power
Options 600 W
1 kW, 1.8 kW



FEATURES

- 12.1 in or Black Box Versions
- Multiple Power Options
- Mark to OLEX or TimeZero
- Bottom Hardness
- Legendary Quality
- Integrated GPS (non BB)
- Remote Controls
- 40 Hours Bottom Mapping
- Split Screen Mode
- Easy to mount
- Easy to Use

Specifications

- | | | | |
|----------------|---------------|------------------------|---------------------|
| • Chart | C-MAP SD | • Frequency | 50 & 200 khz |
| • Wake Memory | Card | • Output Power | 600 W, 1 kW, 1.8 kW |
| • Mark Memory | 64,000 Points | • Depth Range | 0-5000 ft |
| • Wake Colour | 48,000 Points | • Wake Colour | 1,000 Points |
| • Route Memory | 1,000 Points | • Colour Configuration | 5 Patterns |

Optional Extras

- Remote: CR04
- GPS: GP-16H, GP-17H, CP-17HD
- Water Temp: TC02CS, TCK01
- Water Temp: TC03-5/10 (Transom)

"Di" series utilizing HONDEX's latest digital technology.



Introducing new technology of direct digital conversion. The optimized filtering even for weak signal is now available. "Deeper detection for deep water" and "Higher resolution image for shallow water" are in your hands.

"Di" Features:

- Dual display for same frequency:** Different gain settings are possible for single frequency image by splitting the image of single frequency to two different screens.
- Whole Display Gain Adjustment:** Gain adjustment reflects to whole the past image (all display presentation).



HONDEX HE-881

\$1395

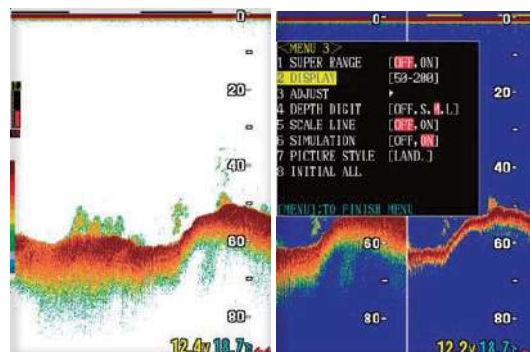
Legendary Performance and Reliability



8.4" Clear Display Model

"Multi-Display Split"
for your Preference

50/200kHz Dual Frequency



FEATURES

- 8.4 in Colour Display
- 600 W or 1000 W versions
- 50&200 kHz Frequency
- Portrait and Landscape Modes
- Bottom Hardness
- Split Screen Mode
- Easy to Mount
- Easy to Use
- Legendary Quality

HONDEX HE-775-WB

\$2200

All the Power and Flexibility you need in a Sounder

FEATURES

- 10.4 in Colour Display
- 1 kW, 2 kW and 3 kW Versions
- 50&200 kHz Frequency
- Portrait and Landscape Modes
- Split Screen Mode
- Easy to Mount
- Easy to Use
- Legendary Quality

Accessories

- Thru-hull Water Temp Sensor: TC02CS (8P-15m) + TCK01
- Transom Water Temp Sensor: TC03-05 (8P-5m)
- Transom Water Temp Sensor: TC03-10 (8P-10m)



"Di" series utilizing HONDEX's latest digital technology.



Introducing new technology of direct digital conversion. The optimized filtering even for weak signal is now available. "Deeper detection for deep water" and "Higher resolution image for shallow water" are in your hands.

"Di" Features:

- Dual display for same frequency:** Different gain settings are possible for single frequency image by splitting the image of single frequency to two different screens.
- Whole Display Gain Adjustment:** Gain adjustment reflects to whole the past image (all display presentation).



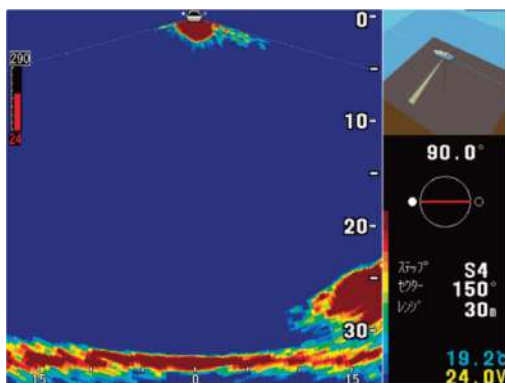
HONDEX HE-7731II-WB with Auto Hoist

\$6995

The Evolution of Commercial Fishing Ultra-Compact, Cost-Effective Sonar, at an Attainable Price

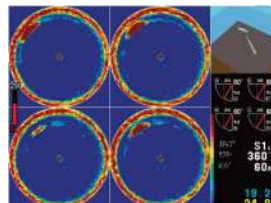
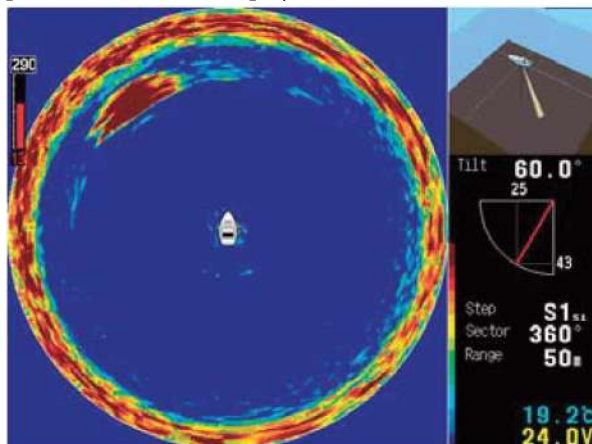
Bottom Sonar Mode

Sea floor condition or fish school are easily detected and shown as cross-section view by rotating the transducer with motor. Also, possible to select 4-Display Mode and Off-Center Mode.

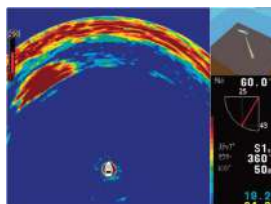


Sonar Mode

Possible to detect wide range by rotating the transducer. The detection range (scanning sector) can be selectable to cover from narrow to whole circle. Also, possible to select 4-Display Mode and Off-Center Mode.



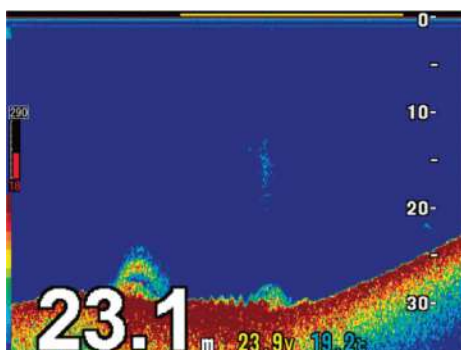
4-Display Mode



Off Centre Mode

Echo Sounder Mode

Display the bottom shape and fish school information just like conventional fishfinder.


Di HONDEX
DIGITAL
TECHNOLOGY


By rotating the vibrator sequentially, the surrounding direction can be detected in a wide range. By switching the detection angle (sector), it is possible to detect from a narrow range to the entire circumference. It can also be switched to off-center mode, and both modes can display four screens.

FEATURES

Display :	10.4 in Colour TFT LCD
Number of Pixels :	640 x 480
Operating Voltage :	11-35 VDC
Power Consumption :	27 W
Display Mode :	Sonar Mode, Bottom Sonar Mode, Sounder Mode
Transducer (Hull Unit) :	Manual or Auto
Output Power :	1 kW
Frequency :	290 khz
Operating Range :	0 ~ 300 m
Sonar Mode Tilt-Range :	0 ~ 90 Deg (1 Deg step)
Bottom Sonar Beam Angle :	30/60/90/120 Deg



HONDEX HE-7300-WB

\$2895



Next Evolution of Commercial Fishing
 High-Standard Echo Sounder
 Optimized Image Presentation for Different Water Depth

FEATURES

- 10.4 in Colour Display
- 28 khz to 200khz Frequency Range
- 1 kW Output Power
- Variable Frequency Tuning for clearer picture
- Portrait and Landscape modes
- Split Screen Mode
- Easy to mount
- Easy to Use
- Legendary Quality

ISO14001



ISO9001



Di HONDEX
 DIGITAL
 TECHNOLOGY

Accessories

- Thru-hull Water Temp Sensor: TC02CS (8P-15m) + TCK01
- Transom Water Temp Sensor: TC03-05 (8P-5m)
- Transom water Temp Sensor: TC03-10 (8P-10m)

HONDEX TRANSDUCERS & ACCESSORIES

TD-26
\$295

FEATURES

Frequency Range: 50 & 200 khz
 Mount: Thru-Hull
 Cable Length: 8 Meters
 Connector: Small 3 Pin
 Power Output: 600 W
 Material: Bronze
 Limited Warranty: 1 Year


TD-340T
\$1175

FEATURES

Frequency Range: 30-70 khz, 130-220 khz
 Mount: Thru-Hull
 Cable Length: 8 Meters
 Connector: 5 Pin
 Power Output: 1 kW
 Material: Bronze
 Limited Warranty: 1 Year


TD-47T
\$750

FEATURES

Frequency Range: 50 & 200 khz
 Mount: Thru-Hull
 Cable Length: 12 Meters
 Connector: 5 Pin
 Power Output: 1 kW
 Material: Bronze
 Limited Warranty: 1 Year


TD-67T
\$950

FEATURES

Frequency Range: 50 & 200 khz
 Mount: Thru-Hull
 Cable Length: 12 Meters
 Connector: 5 Pin
 Power Output: 1.8 kW & 1 kW
 Material: Bronze
 Limited Warranty: 1 Year


TEMP SENSOR
\$260

FEATURES

Mount Thru-Hull
 (Includes Gland)
 Cable Length: 15 Meters
 Connector: Small 3 Pin
 Power Output: N/A
 Material: Bronze
 Limited Warranty: 1 Year



TC02CS

REMOTE
\$250

FEATURES

Frequency Range: N/A
 Cable Length: 2 Meters
 Connector: 4 Pin
 Power Output: N/A
 Material: Plastic
 Limited Warranty: 1 Year



CR04

Since FURUNO's inception in 1948, when the world's first fish finder was commercialized, FURUNO ELECTRIC CO., LTD. has been responding to the needs of the maritime industry through developing various types of marine electronics. Today, FURUNO is a total marine electronics manufacturer operating on a global scale with a great many loyal customers.

DFF1-UHD

\$2695

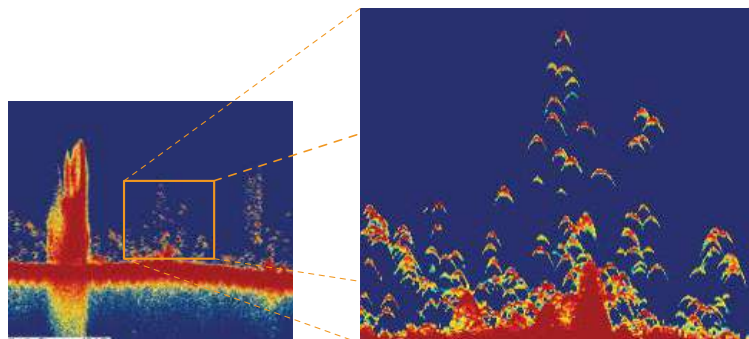


Find More Fish With The Next Generation of Fish Finder

You've seen the advancements made when Furuno introduced UHD technology to their line of NavNet DRS Radars. Now, Furuno is delivering those same advancements in signal clarity and target definition to Fish Finding, with their DFF1-UHD - Ultra High Definition Network Fish Finder.

FEATURES

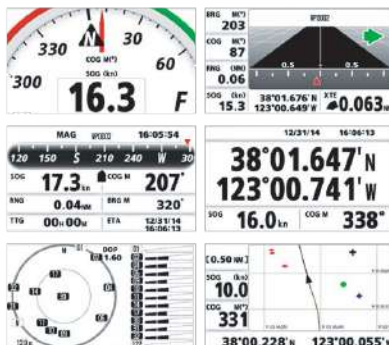
- Live viewing in TimeZero
- Density of fish school
- Bottom contours
- Discrimination of single fish close to the bottom
- Advanced filtering capabilities and digital auto tuning, which eliminates noise
- Connect to NavNet 3D and TZtouch/TZtouch2/TZtouch3. Choice of transducers (600 W or 1 kW).
- Designed to operate over a broadband range of frequencies utilizing a broadband transducer



GP39

\$750

Accurate and Reliable Position Fixing



- 12-channel GPS receiver combined with integrated SBAS (WAAS/EGNOS/MSAS)
- 4.2 inch colour LCD
- 3,000 points of ship track
- 10,000 waypoints
- 100 routes (each with up to 30 waypoints)
- GP39 can be networked with a Fish Finder, Sonar, Radar or other navigation equipment
- Display Modes include Plotter, Highway, Steering, NAV Data, and Satellite Monitor, as well as 2 user-customizable display modes

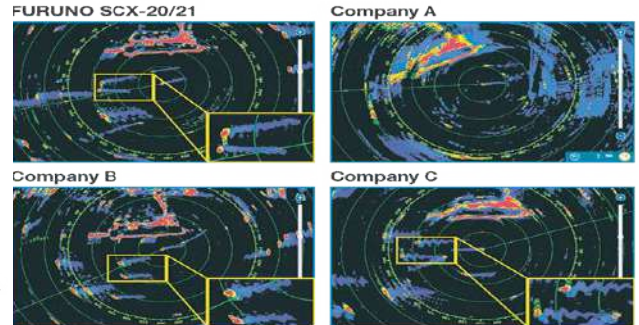
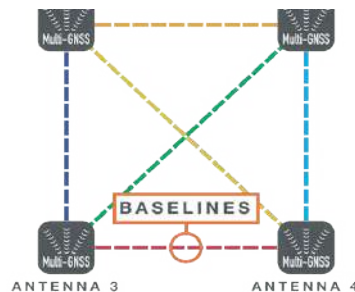


SCX20/21

\$2195

Utilizing four separate GNSS Antennas for the ultimate in responsiveness, the SCX20 and SCX21 set a new standard for reliable and accurate heading for all of your marine electronics. Traditionally, a Satellite Compass™ calculates heading using one baseline between two antennas; the SCX20/21's four antennas can calculate heading information using any one of the six baselines drawn between the four antennas.

NMEA2000 OR NMEA0183



The unprecedented quad-antenna design of the SCX20 and SCX21 makes them capable of calculating extremely accurate heading, pitch, roll, and heave information. They are the perfect heading solution for complex vessel installations where the view of satellites may sometimes be obstructed.

DRS6ANXT

Starting at \$10,250

The Furuno NXT Radar is the next step in Radar evolution

FEATURES

- 3.5', 4' or 6ft open array
- FURUNO RezBoost™ Technology for beam sharpening
- Target Analyzer™
- Fast Target Tracking™
- Radar Overlay with TimeZero
- Integration with TimeZero

Compatible with TZtouch/TZ-touch2/TZtouch3



The Furuno NXT Radar is the next step in Radar evolution; a Solid-State Radar with pulse compression, Target Analyzer™ and Fast Target Tracking™ utilizing Doppler technology. Combined with FURUNO exclusive RezBoost™ technology for beam sharpening, NXT packs the performance of a larger Radar in a more compact package.

FCV588

\$2250



RezBoost is a game-changer for fishermen desiring the best possible performance and picture from a traditional transducer.



FEATURES

- 600 W or 1 kW Power Output
- 8.4 inch Colour Display
- Dual-frequency (50/200 kHz) RezBoost™ technology
- ACCU-FISH™ is a fish size assessment function
- Display fish marks
- Bottom Discrimination mode
- Distinguish fish from seabed with White Line function
- Furuno's Fish Alarm

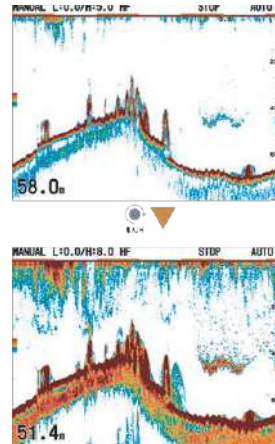
FCV295

\$5395

The Fishing Machine for the Professional

FEATURES

- 1, 2, 3 kW Power Output Options
- 10.4 inch Colour Display
- Distinguish fish from seabed with White Line function
- Furuno Free Synthesizer (FPS) Transceiver allows a wide selection of operating frequencies
- Choose any two frequencies between 28 and 200 kHz to fit your fishing operation
- Post-processing gain control gives you quick results
- Fine tune your Fish Finder with the operating frequency adjustment
- Increased transmission rate for detailed detection



NAVPILOT 711C/OB

\$5500



Navpilots offer self-learning and adaptive software.

Features:

- Easy installation and smart network configuration
- "Economy" and "Precision" navigation modes provide fuel savings
- Perfect for inboard fishing vessels
- NMEA and Bluetooth®
- Bright and clear display

**PAIRED WITH
SCX21 SAT COMPASS**

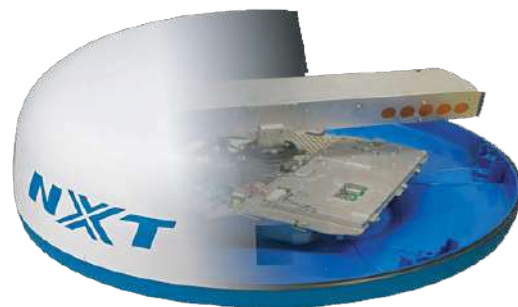
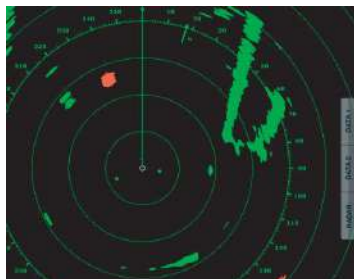
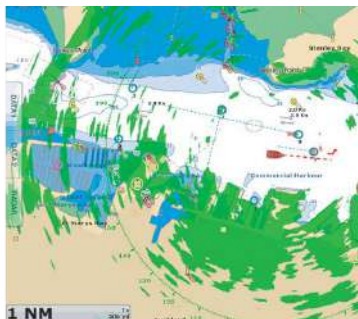
DRS4DNXT

\$4795

The **NXT** step with Doppler Radar technology!

FEATURES

- 4 kW 19 inch Radome
- Doppler Radar Technology
- FURUNO RezBoost™ Technology for beam sharpening
- Target Analyzer™
- Fast Target Tracking™
- Radar Overlay with TimeZero
- Integration with TimeZero
- Compatible with TZtouch/ TZtouch2/TZtouch3



1815

\$3895

Raising the Bar in Quality and Performance!

The automatic gain reduction on the 1815 makes use of algorithms that have been refined over many decades of Furuno experience and innovation. This means the 1815 is second to none in clutter rejection. With no input from the user, this Radar will automatically eliminate unnecessary echoes and present a clear display image with every sweep of its antenna.



Furuno's Fast Target Tracking (TT) function allows the user to manually or automatically track up to 10 targets.

Furuno's True View mode to make reading the display more intuitive. For example, when your vessel is turning, the echoes stay consistent on the display, so you can constantly see the targets on the screen, without waiting for them to update after the turn.



FEATURES

- 4 kW 19 inch Radome
- Connect up to 3 Stations with a single dome
- 4 kW 19 Inch Radome
- 1/8 to 36 Nautical Mile Range
- Short Range Target Discrimination
- 100 AIS targets
- 10 Tracking target
- Enhanced Auto Tuning
- 8.4 inch colour screen



Use Up To 3 Stations With One Dome

This configuration provides a cost saving and dynamic setup for situations requiring the ability to monitor the Radar from different locations on the ship.

Versatility

Overhead mounts are available for added flexibility or you can flush mount it with a simple 5" hole saw.



FR10 RADAR DISPLAY

\$3895

Radar Options For Any Vessel

The FR10 Radar features a 10.4" Colour LCD and key panels for simple operation. The display is designed for use with the Furuno DRS X-Class or NXT Radar series, offering unmatched performance and an expanded selection of arrays, from compact domes to large open arrays in both solid-state and magnetron configurations.

Expanded I/O capability includes 1 LAN port for connection with the DRS Radar Sensor of your choice, 3 NMEADA0183 ports, 1 NMEA2000 port, 1 USB port for connection of a mouse or USB flash drive, and a HDMI port for output to an external monitor.

Features

- Risk Visualizer
- Echo Averaging
- Target Analyzer
- Fast Target Tracking
- X-Class Radar Sensor



Target Analyzer™
utilizing Doppler Technology

NXT

NavNet TZtouch3

Starting at \$6500

FEATURES

- Three MFD options, each with a powerful quad-core processor for lightning-fast response
- TZT12F Hybrid 12" display with RotoKey™ and buttons for added accessibility
- TZT16F: 16" Multi-Touch IPS Display
- TZT19F: 19" Multi-Touch IPS Display
- Built-in Dual Channel 1 kW TruEcho CHIRP™
- Pin Code Lock - require a password to access your NavNet TZtouch3 upon startup
- Add AIS, VHF, Compass, Weather, or choose from the world's best Radar and Fish Finder options to dial in your helm for fishing, cruising or sailing, to make the most of your time and keep you safe on the water.



Go on a power trip with the most powerful MFD series available

The beauty of NavNet TZtouch3 is not only in its elegance, simplicity, and power, but in its scalability the perfect helm suite can be as big or small as you need. With edge-swipe features and single tap menu options, you're never more than a tap or swipe away from what you want to see or do. It's that simple.



LEFT EDGE SWIPE - NAVDATA

Swipe from the left to bring up your NavData box. Access general Nav Data from the Data tab or App-specific data when on individual pages.

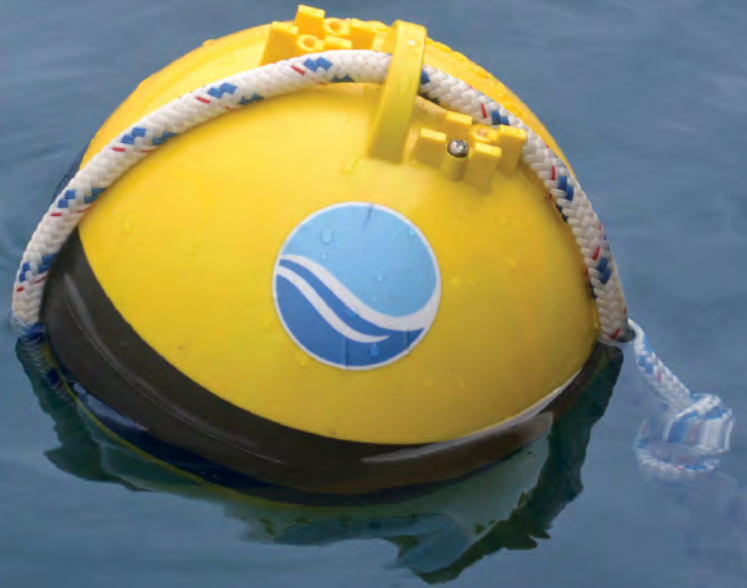


DOWN EDGE SWIPE - QUICK PAGE

Swipe down from the top to select your Quick Pages. Think of these as similar to your car stereo presets. Easily set your favorites with a long press.



Farallon Smart Buoy™ System



The Blue Ocean Gear Farallon Smart Buoy™ System allows fishermen to monitor the location and movement of their deployed fixed-gear — anytime, anywhere.

2021 DEPLOYMENTS

Our Smart Buoys have been successfully deployed in North America's largest and most demanding fixed gear fisheries, from Alaskan king crab to New England lobster to pelagic longline



EFFICIENT OPERATIONS

Drive directly to set gear, **saving hours of work and gallons of fuel per run.**



PRECISE POSITION

Navigate to **precise coordinates** vs. waypoint approximations, even if weather, wind, or waves move the gear.



REMOTE MONITORING

Track buoy movement anytime in all conditions. **Receive event notifications** via customizable alerts. Optional sharing of data with other vessels/fleets to avoid gear conflict.



UNIVERSAL SYSTEM

Compatible with **most fixed-gear types and configurations** including: pots/traps, longlines, FADs, aquaculture, and ropeless gear.



NO TRAINING REQUIRED

No special equipment or training required to set up or deploy. **Buoys turn on automatically** when they are deployed.

Even through the harshest conditions, ComNav's products have earned a stellar reputation for top performance and dependability.

P4 AUTOPILOT

CONTACT US

Optimized for professional, commercial and leisure applications, the adaptive software system, fine tunes essential steering parameters for speed, trim, drift, currents, roll, pitch, weather and wind effects.



Intelligent Steering

FEATURES

- IST – Intelligent Steering Technology provides superior vessel steering capability
- AUTO-SETUP – allows auto-drive detection, rudder response time, compass detection and calibration
- SUNLIGHT viewable LED backlit 5.7 in TFT LCD 640 x 480 display
- ALC – Automatic Leeway Compensation for Drift, Tide & Wind
- Auto Thrust-assist for Dead-ahead slow or station keeping (optional)
- Multi-Language capability: English, Chinese, French, German, Norwegian, Spanish, Italian, Icelandic, and more
- 9 level backlit LCD display
- Colour head offers Red Night Vision mode
- Pre-defined parameter sets for full or semi-displacement, planning hulls, stern drives and sailboats
- Multi-Station capability with security station lock
- PORT and STBD dodge buttons for collision avoidance
- Fully compatible with onboard NMEA instruments and most steering systems

SIMRAD®

A2004

CONTACT US

Autopilots are developed to provide commercial vessels, large yachts and megayachts with the highest standards of reliability and functionality needed in a professional environment.



FEATURES

- Interface designed for commercial marine applications
- Large, heavy-duty rotary control dial for precision steering
- Continuum steering technology
- Optically bonded 4.1-inch colour display with 170-degree viewing angle
- Thruster integration & heavy-duty rudder feedback support
- Configurable work mode and low/high speed modes
- Automated turn patterns for fuel-efficient, hands-free manoeuvres
- No Drift steering holds course against wind and tide
- Flush or bracket mounting options
- Certified NMEA 2000® connectivity

SIMRAD CRUISE

Available in 5, 7 and 9 inch versions, Simrad Cruise can be dash mounted or bracket mounted to fit any boat's helm station. Take your charts to the next level with a wide selection from C-MAP® and Navionics® for increased levels of detail and C-MAP® Easy Routing. The display is ideal for installation in open air vessels such as bay, deck, ski and wakeboard boats, bow riders and tenders.

The new Simrad Cruise is the most intuitive chartplotter available. Taking ease of use to a new level, Simrad Cruise is a chartplotter first and depth finder second – offering reliable GPS navigation at an affordable price. Free from complicated fishing-specific sonar and networking features, with Simrad Cruise you won't need to master complex electronics – simply turn on your display and go.

CONTACT US



NSS EVO3S

CONTACT US

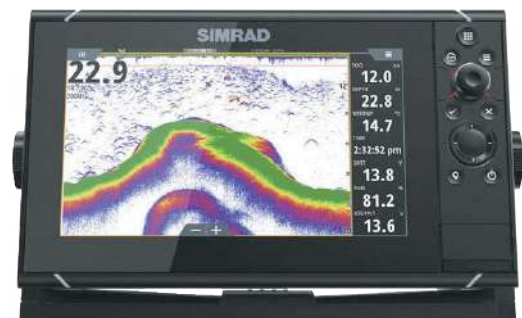


Centralized access to charting, sonar, radar, and other on-board systems. SolarMAX™

HD display technology delivers clear visibility and ultra-wide viewing angles, while an all-weather touchscreen and full featured keypad provide total control in all conditions.

FEATURES

- Reliable control in all conditions: switch seamlessly between multi-touch and a full keypad with rotary dial
- Integrated echosounder featuring dual-channel CHIRP, ForwardScan® sonar, and StructureScan® HD imaging
- Works with StructureScan® 3D imaging, the S5100 Sounder, and other Simrad sonar modules
- Compatible with Halo™ Pulse Compression radar, Broadband 3G™/4G™ radar, and HD Digital radar systems
- Integrate with Simrad autopilot systems, instruments, AIS, VHF, and other accessories
- Industry-standard NMEA 2000® connectivity to third-party engines and accessories
- Embedded high-gain 10 Hz GPS/GLONASS receiver
- Supports flush or bracket-mount integration



GO XSE

CONTACT US

Take control of your on-board electronics with the GO XSE



Available in 5, 7, 9, and 12 inch screens

FEATURES

- Easy to use multi-touch interface
- Full-featured chartplotter with widest available cartography support (Insight, Navionics, CMAP)
- Radar display for Simrad Broadband 3G™/4G™ and Halo™ Pulse Compression radar systems
- Includes worldwide basemap
- Plan smarter with TripIntel™ technology
- 9-inch flush or bracket mount display
- Widescreen with bright LED backlight
- High-speed 10 Hz GPS receiver
- Built-in Broadband Sounder™, CHIRP sonar, StructureScan® HD imaging or ForwardScan™ sonar support (transducer required)
- Built-in GoFree™ Wi-Fi
- Dual microSD card slots
- Compatible with the Simrad WM-3 SiriusXM satellite weather module (North America only)
- NMEA 2000® compatible

R3016

CONTACT US

R3016 was engineered to meet the need for a dedicated Radar Control Unit to serve in non-SOLAS applications aboard commercial vessels, bringing a professional-grade radar interface to the unapproved radar category



FEATURES

- 16-inch widescreen display
- Simple, low-impact installation with integrated display, controls and processor
- Compatible with multiple Simrad radar solutions to suit a diverse range of applications
- Widescreen display maximizes screen space available for alarms, indicators and target tracking information
- Easy to learn and operate for reduced training time and cost
- Large and responsive buttons provide reliable control in all conditions, and with wet or gloved hands
- Ideal for dual-helm vessels, a fully functional 'clone' station can be created with just an HDMI-connected display and Simrad O2000 Controller

Model 476 \$1375

Get the message through when all others fail!

FEATURES

Band: VHF
Size: 18.5 ft
Gain: 10 dB
Max Input Power: 350 W
SWR: 1.5:1
Ferrule: Aluminum Sleeve
Coax: N/A
Connector: PL-259
Colour/finish: White
Polarity: Vertical
Impedance: 50 Ohms
Shakespeare
Limited Warranty: 2 Years

Model 4018M \$645

Long-distance VHF antenna is rigid enough to stay erect in rough seas.

FEATURES

Band: VHF
Size: 19 ft
Gain: 9 dB
Max Input Power: 50 W
SWR: 1.5:1
Ferrule: Chrome-plated brass
Coax: 20 ft RG58
Connector: PL-259
Colour/finish: White
Polarity: Vertical
Impedance: 50 Ohms
Shakespeare
Limited Warranty: 2 Years

Model 5230 \$680

The most effective 8dB antenna system available anywhere.

FEATURES

Band: VHF
Size: 14 ft
Gain: 8 dB
Max Input Power: 200 W
SWR: 1.5:1
Ferrule: Stainless Steel
Coax: 20 ft RG-8/X
Connector: PL-259
Colour/finish: Galaxy White
Polarity: Vertical
Impedance: 50 Ohms
Shakespeare
Limited Warranty: 5 Years

Model 5225XT \$350

Shakespeare's best – maximizes range and quality in a great looking antenna.

FEATURES

Band: VHF
Size: 8 ft
Gain: 6dB
Max Input Power: 100 W
SWR: 1.5:1
Ferrule: Stainless Steel
Coax: 20 ft RG-8/X
Connector: PL-259
Colour/finish: Galaxy White
Polarity: Vertical
Impedance: 50 Ohms
Shakespeare
Limited Warranty: 5 Years

Model 4351 \$132

When you need a large antenna, but don't have room for one.

FEATURES

Band: AM-FM
Size: 3 ft
Gain: N/A
Max Input Power: N/A
SWR: N/A
Ferrule: Nylon
Coax: N/A
Connector: N/A
Colour/finish: White
Polarity: Vertical
Impedance: 93 Ohms
Shakespeare
Limited Warranty: 2 Years

Model 5225XT-AIS \$260

Get the message through when all others fail!

FEATURES

Band: AIS
Size: 8 ft
Gain: 6dB
Max Input Power: 100 W
SWR: 1.5:1
Ferrule: Stainless Steel
Coax: 20 ft RG-8/X
Connector: PL-259
Colour/finish: Galaxy White
Polarity: Vertical
Impedance: 50 Ohms
Shakespeare
Limited Warranty: 5 Years

Model 5101 \$105

A new standard of excellence in an economical antenna!

FEATURES

Band: VHF
Size: 8 ft
Gain: 6 dB
Max Input Power: 50 W
SWR: 1.5:1
Ferrule: Chrome-plated brass
Coax: 15 ft RG58
Connector: PL-259 (not installed)
Colour/finish: White
Polarity: Vertical
Impedance: 50 Ohms
Shakespeare
Limited Warranty: 2 Years

Model 5120 \$105

Get the message through when all others fail!

FEATURES

Band: AM/FM
Size: 8 ft
Gain: N/A
Max Input Power: N/A
SWR: N/A
Ferrule: Chrome Plated
Coax: 15 ft RG62
Connector:
Colour/finish: White
Polarity: Vertical
Impedance: 93 Ohms
Shakespeare
Limited Warranty: 2 Years



Atlantic Electronics Limited
Serving the Marine Industry Since 1973

Like and follow us on Facebook to see our clearance items

Commercial mariners and boating enthusiasts alike covet Icom marine radios for their legendary durability and ease of use. Icom's marine equipment includes: long range, ship-to-shore, single side-band (SSB) transceivers for worldwide communications and the best in shorter range VHF marine communications.

M330/M330G

\$275/325

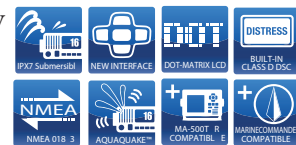
MADE IN JAPAN



Top Performance Ultra Compact VHF

FEATURES

- Ultra Compact Body
- Built-in Class D DSC with a CH70 Dedicated Receiver
- GPS Receiver Built-in with Supplied GPS Antenna (IC-M330G)
- Easy-to-Read Full Dot-Matrix Display
- IPX7 Submersible Construction
- AquaQuake™ Draining Function
- Made in Japan Quality and Reliability



GPS
BUILT-IN
GPS RECEIVER

M424G

\$485

FEATURES

- Built-in GPS Receiver Simplifies Installation
- Active Noise Cancelling for Maximum Clarity
- User Interface & White Backlit LCD & Keypad
- 10W Loud Audio, Public Address and Foghorn
- Optional COMMANDMIC™ HM-195GB/GW for 2nd Station/Intercom
- Built-in Class D DSC
- IPX7 Submersible Protection
- Common NMEA Interface for GPS/NAV Connection
- MarineCommander™ and MA-500TR Compatible
- AquaQuake™ Function



MADE IN JAPAN

Active Noise Cancelling Technology and Built-in GPS for Simple Installation

M510

\$915



MADE IN JAPAN



Fixed Mount VHF and AIS Receiver C with NMEA 2000™ Connectivity

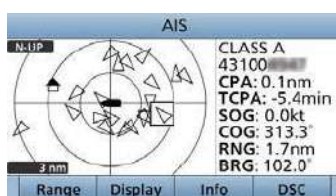
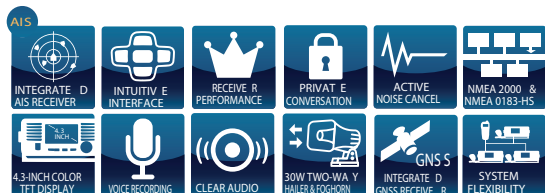
FEATURES

- Radio controls & intercom via smart device
- Integrated AIS Receiver
- Simplified navigation function
- Voice Scrambler option
- Active Noise Cancelling
- NMEA 0183/2000 Connectivity
- Auto Foghorn Option.
- AquaQuake degradation prevention

M605

\$1395

MADE IN JAPAN



The best just got better!

FEATURES

- Received the NMEA Best VHF Radio Product Award for 2017 & 2018.
- ITU Class D DSC
- Last Call Voice Recording
- IPX8 Submersible Plus™
- Active Noise Cancelling
- 30 W Two-Way Hailer and Automatic Foghorn
- Integrated GNSS receiver
- Up to Three COMMAND HEAD/COMMANDMIC™
- Wide Viewing Angle 4.3-inch Color TFT LCD
- Integrated AIS* Receiver
- Optional voice scrambler, UT-112 for private conversation
- NMEA 2000™, NMEA 0183/-HS Connectivity



TARGET LIST (136)			
MMSI/Name	RNG	BRG	
DAIEIMARU NO.3	3.3	154	
GYOKO MARU	3.4	147	
MIRAI E	3.4	249	
TOKUYO MARU NO21	3.9	259	
	Display	Info	DSC

MA510TR

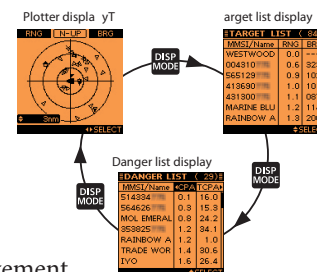
\$1195



Fully Capable Class B AIS Transponder for Fishing Boats

FEATURES

- Class B AIS Transponder
- 4.3" Colour Display
- Individual DSC Call*
- 100 Waypoints Memory
- Safety-Related Message
- 3-line NMEA Input/Output
- GPS Receiver Comes with MA-510TR
- CPA and TCPA for Collision-Risk Management
- Full dot-matrix display with adjustable backlight and contrast
- IPX7 waterproof protection
- Self diagnosis function
- Flush mount installation with optional MB-75
- Slow warning function



MADE IN JAPAN

M25

\$230

Floating Marine VHF Radio



FEATURES

- 5W Output Power
- 1500mAh Li-ion Battery
- Micro USB Charge Port
- LCD Auto Backlighting
- IPX7 Submersible Protection
- Lightweight 7.8 oz
- AquaQuake™ Removes Water From Speaker
- Weather Channel with Weather Alert

MADE IN JAPAN

T-941

\$3995

SI-TEX's exclusive HyperDigital Processing (HDP) and Dual-Range Display

FEATURES

- 4 kW 36 mile range
- 25 in Radome
- Split-screen display of long-and-short range targets simultaneously
- True-color targets based on strength
- Clearly ID moving targets with True Trail
- Warning Zone, Head Up/North Up/Course Up/True Motion Display
- Standard AIS Interface module capable of tracking 100 targets*
- Optional Automatic Tracking Aid (ATA) and AIS interface**
- Overall Dimensions (w/o bracket): 9.45 in (W) X 10.35 in (H) X 5.21 in



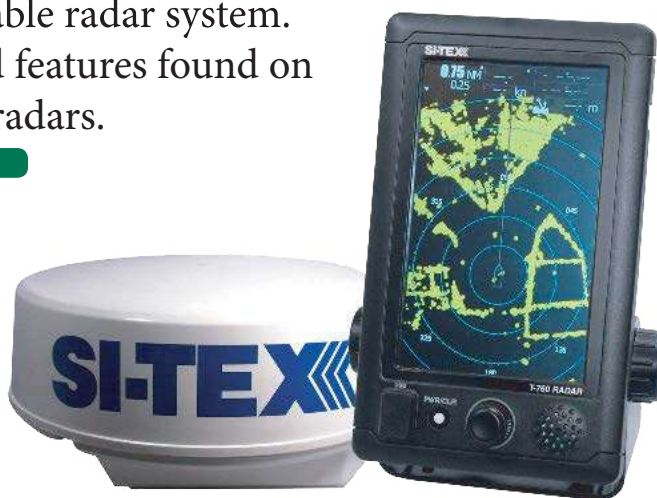
T-760

\$3350

Big time features, plenty of power and innovative touchscreen control in a compact, affordable radar system. Packed with many advanced functions and features found on SI-TEX's professional marine radars.

FEATURES

- 4 kW transmitters for accurate target
- Multi-speed 16/27/36/48 rpm antenna rotation
- Standard 50-target AIS tracking capability**
- Standard 10-target MARPA capability*
- 11 Trail Indication settings
- Auto or Manual Sea/Rain Clutter modes
- Relative Motion/True Motion/North-Up/HeadUp/Course-Up
- Simple operation via touchscreen and single
- Slim, stylish case with vertical display
- 5.35 in (W) X 8.85 in (H) X 3.62 in (D)



MDA-5

\$1695

Metadata AIS | Black Box Modules Plug-and-Play AIS Integration

FEATURES

- Rmax™ technology: All AIS messages are received and decoded in real time
- Transceiver features internal 50-channel GPS
- Transceiver/receiver feature NMEA0183, NMEA2000 and USB connectivity
- Antenna splitter allows full VHF communications and AIS send/receive with single antenna
- Clear Call Routing ensures VHF emergency call priority
- IPx7 Waterproof
- 5.5 in X 3.9 in X 1.9 in



NavPro 900/1200

\$1595/3100

Professional-Grade Full-Featured Electronic Chart Plotter

FEATURES

- Hybrid Touch Screen Display
- NMEA-0183 & NMEA2000 Interfacing
- C-Map 4D Cartography
- Optional dedicated Remote Control Available
- Easy Flush Mount No Kit Needed
- Internal GPS Receiver & Antenna
- New Easy User interface
- Full AIS Integration



Compatible with C-Map 4D and Max

9"



NavPro 900

Mirror control app

What about duplicating your plotter on your tablet?

It's easy: establishing a wi-fi connection, you can use your tablet as a touchscreen chart plotter!

What you see, is what you get

The mirror image is fully functional. Thanks to the MC App, you can build your next route or manage your marks while sitting on the sun deck of your boat.

Ultra bright display

The NavPro series displays ensure clarity and contrast in all light conditions.

Hybrid interface

NavPro series maximizes the benefits of the touch screen, with the reliability of an ergonomic keyboard. The rotary knob gives you a fast and precise control in every condition, while the touch screen allows the best experience in map exploration and route building.

12"



NavPro 1200



Keys



Joystick



Rotor



Touch

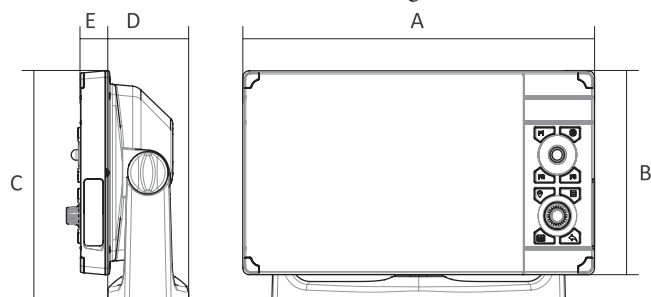


NMEA 0183 & 2000

The NMEA interface can transform your chart plotter in a multifunctional display to control your AIS, Autopilot, Engine etc. functions.

3 x User customizable keys

Programming F keys give you instant access to your favorite functions.



	NavPro 900	NavPro 1200
A	278 mm (10,9 in.)	391 mm (15,3 in.)
B	154 mm (6,06 in.)	258 mm (10,1 in.)
C	174 mm (6,8 in.)	279 mm (10,9 in.)
D	64 mm (2,5 in.)	120 mm (4,7 in.)
E	32,6 mm (1,2 in.)	30 mm (1,1 in.)

Mariners around the world have trusted SI-TEX for more than 40 years. They trust us to build tough-as-nails marine electronics that perform in the harshest environments and conditions on the planet.

Explorer NavPro

\$1195



Turns any onboard HDMI display or off-the-shelf PC monitor into an advanced electronic charting navigation system.

FEATURES

- HDMI Video Output & NMEA2000
- Engine monitoring & AIS integration
- Uses C-MAP MAX or 4D charts
- Two NMEA0183 data ports

ORION

\$3150

New! Orion 10 Chartplotter/Sounder

The New Orion chartplotter features a hybrid touch 10.4" display with both horizontal and vertical mounting.

Features:

- NMEA 0183 and NMEA 2000 connectivity
- Internal GPS receiver (52 channels)
- Compatible with C-MAP® 40 Cartography
- Store up to 100,000 waypoints and maps
- Bluetooth® connectivity with companion app for remote control



Atlantic Electronics Ltd is looking for you!

Did that get your attention, because we are looking for you or someone you might know that would be a good fit to become one of our next Service Technicians.

Marine experience? Apply! No marine experience but think you have what it takes? Apply!

We are that busy that we need great people to help expand our diverse team of techs who cover the largest lobster/marine fishing grounds in Atlantic Canada.

What we want is your eagerness to learn, your drive to succeed and the desire to connect and build relationships with our customers, just like we have been doing since 1973.

We offer a very competitive compensation package including a company car, training, vacation, benefits and retirement... Just to name a few. All we need in return is to be the best you can be.

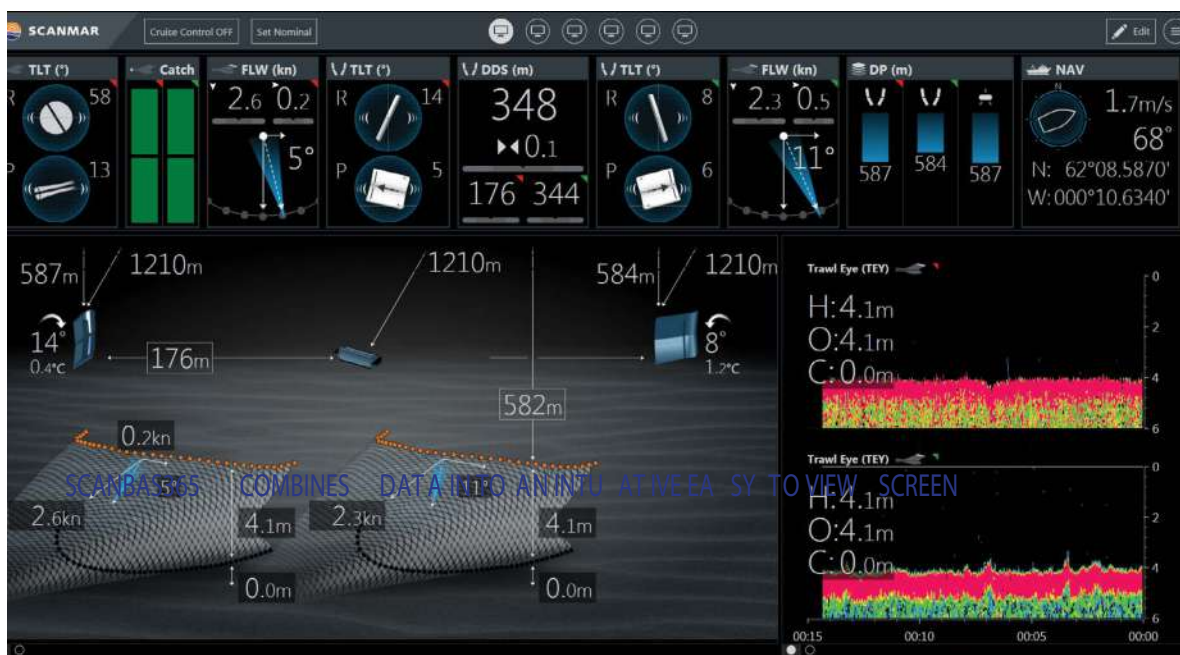
Send cover letter and resume to Rward@ael.ca



SCANMAR

Scanmar is the pioneer among producers of Catch Control Systems. Our main objective is to offer commercial fishermen equipment for increased efficiency and financial gain.

SCANBAS365 Combines Data into an Intuitive Easy to View Screen



ScanBas 365 Bridge Console

FEATURES

- Long Battery Life (10 days)
- Target Focus - Make Sure Your Rig is Correct
- See: Trawl Door Spread
Angle of Roll Sensors to Headline
Trawley Sensors
Flow Catch

We always strive to improve our products, and we listen carefully to the users.

We believe that our close cooperation with the fishing industry combined with our genuine interest and technological approach has been vital to our success.





CONNECTIVITY WITHOUT COMMITMENT



Outfit your vessel with an all-inclusive solution that offers everything you need
to support your business at sea for one monthly charge –

KVH AgilePlans® – Connectivity as a Service.

Plans starting as low as \$499_{USD} and includes:



Rugged, Proven
VSAT Hardware



Regional HTS
Broadband
as Fast as 5 Mbps¹



Zero Maintenance
Costs



Unlimited Email
& Texting



Prioritized VoIP
Service²

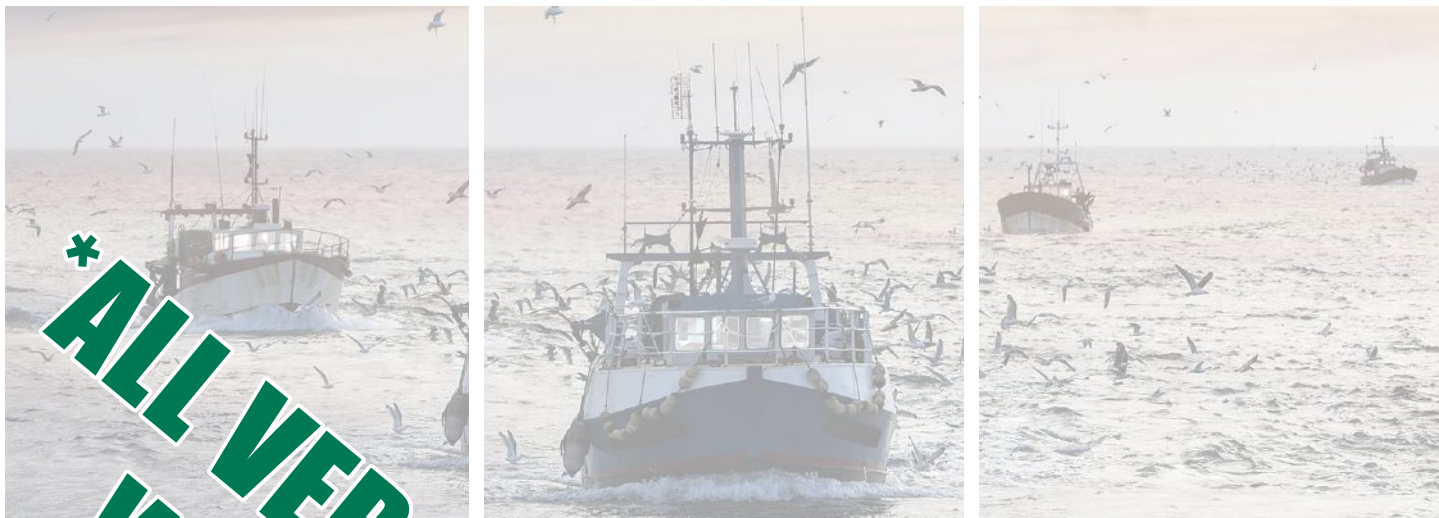


Free Shipping &
Free Installation

kvh.com/agileplans

©2020 KVH Industries, Inc. KVH, TracPhone, AgilePlans, and the unique light colored dome with dark contrasting baseplate are registered trademarks of KVH Industries, Inc.

¹Data rates are rate plan maximums and may vary in different regions and under different conditions ²Calls to Canada are \$0.15/minute



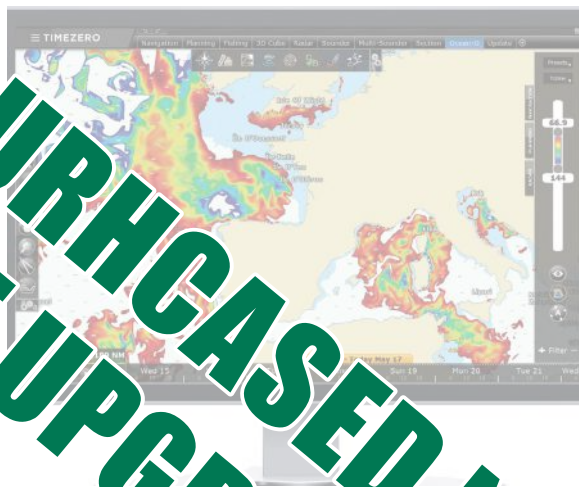
*** ALL VERSION 4 PURCHASED NOW
WILL GET A FREE UPGRADE
TO VERSION 5**



PROFESSIONAL
VERSION 4



Personal Bathymetric Generator



High Resolution Oceanographic Forecasts



Multi-Beam Sounder Integration



Trawl Positioning Module



TIMEZERO

www.timezero.com



DON'T SETTLE

We wanted the best marine computer for our customers

- Solid State — No Moving Parts
- 12v or 24v
- 4 com Ports (extend to 6)
- Internal Chipset
- Expandable RAM



Designed For You

Choose Your Options

- TimeZero or Olex
- 15 INCH or 21 INCH MONITOR

We stand Behind Our Products

We offer a Limited 1 Year Warranty on our branded monitors and 1 Year on our branded Computers.



Available only from Atlantic Electronics Limited or authorized reseller.

Intellian i4/i4P

Most Popular Size
Marine Satellite TV Antenna System



Popular size with higher performance

45cm reflector diameter with nationwide coverage for North America, Europe and the regional service around the globe.

Faster signal acquisition

Intellian's exclusive Wide Range Search (WRS) algorithm allows the antenna to search, find and lock on to a signal with incredible speed and accuracy.

Simple & Easy installation

With a single cable to connect the antenna and the ACU, Intellian i4/i4P systems are quick and easy to install. Our advanced ACU is designed to require minimum setup so you can begin to enjoy TV programs aboard your boat in no time.

Wireless connectivity & Aptus mobile

The built-in Wi-Fi enables the ACU to be wirelessly connected. PCs, laptops and smartphones can be used to connect to the ACU and monitor, control and change the settings of the system wirelessly. Intellian Aptus mobile is available for download to access to the ACU via Wi-Fi and operate the antenna from their iPhone, iPad or other network devices. iPhone and iPad are registered trademarks of Apple Inc.

Tune in your favorite HDTV channels

Intellian's i4/i4P provides HD channels from the Ku- band. The HD module is built-in to the Antenna Control Unit of the Intellian i4/i4P for seamless integration and easy installation.

Built-in GPS

The Intellian i4/i4P includes a built-in GPS for easier operation and faster signal acquisition. It allows the i4/i4P to have higher accuracy and easy operation wherever the vessel sails.

User-friendly operation

Antenna Control Unit (ACU), which is supplied as a default package, gives you the user-friendly operation for various function.

Intellian
Connect with the best

AEL Navigation Light Panel Single \$3025/Dual \$3350



FEATURES

- 24 Volt DC Navigation Light Panel: Complies with TP 127E(58.7) \$2159.07
- All In One Enclosure
- Configured for Light Fixtures 0.1 to 3 amps
- UL489 TC approved Circuit breakers for primary power supply
- ATO/ATC fuses for lamp circuits
- Audible and visual alarm for primary power failure
- Visual indicators for primary lamp failure on circuits 1-5
- Alarm test function and silence button
- Low Current Option: Configuration for light fixtures < 0.1 amps \$156.00
- Remote Interface Option w. 8' harness \$404.40
- Surface Mount Control Panel with back cover
- Electronics and input/output connections mounted in separate enclosure



Head Office 1-888-235-3628
 Phone: (902) 468-3628 Fax: (902) 468-6646
 DARTMOUTH, NS
 200 Joseph Zatzman Drive Dartmouth, NS B3B 1N4



MOUNT PEARL, NL
 Phone: (709) 368-8853
 Fax: (709) 368-6461
 1164 Topsail Road P.O Box 803
 Mount Pearl, NL A1N 2Y2

BARRINGTON PASSAGE, NS
 Phone: 902-637-3318
 Fax: 902-637-3696
 PO Box 185, 3593 Hwy 3
 Barrington Passage, NS B0W 1G0



LUNENBURG, NS
 Phone: (902) 634-4004
 Fax: (902) 634-9199
 P.O Box 789 144 Montague Street
 Lunenburg, NS B0J 2C0

YARMOUTH, NS
 Phone: (902) 742-2200
 Fax: (902) 749-1833
 91 Suite A Water Street
 Yarmouth, NS B5A 4P6



Since its inception Atlantic Electronics Limited, has been a leader in marine electronics. We provide products and services to keep you safe, efficient and comfortable on the ocean. Boasting the largest selection of marine electronics in Canada and a dedicated staff of experienced service technicians, we can assist with any installation or repair.



DIGBY, NS
 Phone: 902-378-2188
 Fax: 902-637-3696
 10 Prince William St. Unit 3
 Digby, NS B0V 1A0

BLOOMFIELD PE
 Phone: (902) 853-4000
 Fax: (902) 853-3693
 32 Gard Road P.O Box 50
 Bloomfield, PE C0B 1E0



NORTH SYDNEY, NS
 Phone: (902) 794-7611
 Fax: (902) 794-7002
 P.O Box 481 156 Queen Street
 North Sydney, NS B2A 3M5



Atlantic Electronics Limited

Pricing in effect Until February 28th, 2024, or until supplies last. Prices subject to change without notice.